



# WFL – A Rural Heritage

September 2018

# Federal Lands Highway

1905 – Office of Public Roads succeeds the Office of Road Inquiry

# Federal Lands Highway

1905 – Office of Public Roads succeeds the Office of Road Inquiry

1916 – First Federal Aid Road Act passed,  
50/50 Federal/State funding

# Federal Lands Highway

- 1905 – Office of Public Roads succeeds the Office of Road Inquiry
- 1916 – First Federal Aid Road Act passed  
50/50 Federal/State funding
- 1919 – Bureau of Public Roads formed

# Federal Lands Highway

- 1905 – Office of Public Roads succeeds the Office of Road Inquiry
- 1916 – First Federal Aid Road Act passed  
50/50 Federal/State funding
- 1919 – Bureau of Public Roads formed
- 1921 – Direct Federal Construction Authorized

# Federal Lands Highway

- 1905 – Office of Public Roads succeeds the Office of Road Inquiry
- 1916 – First Federal Aid Road Act passed  
50/50 Federal/State funding
- 1919 – Bureau of Public Roads formed
- 1921 – Direct Federal Construction Authorized
- 1920's & 30's – numerous BPR & CCC projects constructed  
(including Farm to Market roads)

# Federal Lands Highway

- 1905 – Office of Public Roads succeeds the Office of Road Inquiry
- 1916 – First Federal Aid Road Act passed  
50/50 Federal/State funding
- 1919 – Bureau of Public Roads formed
- 1921 – Direct Federal Construction Authorized
- 1920's & 30's – numerous BPR & CCC projects constructed  
(including Farm to Market roads)
- 1956 – Highway Trust Fund & Interstate Highway System

# Federal Lands Highway

1905 – Office of Public Roads succeeds the Office of Road Inquiry

1916 – First Federal Aid Road Act passed, 50/50 Federal/State funding

1919 – Bureau of Public Roads formed

1921 – Direct Federal Construction Authorized

1920's & 30's – numerous BPR & CCC projects constructed  
(including Farm to Market roads)

1956 – Highway Trust Fund & Interstate Highway System

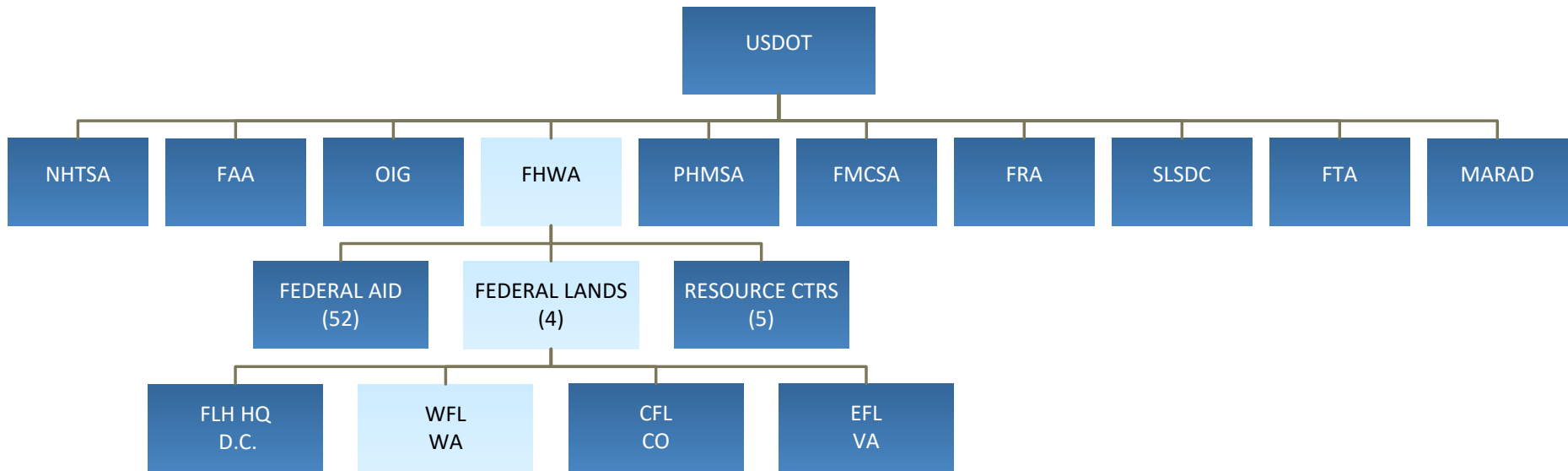
1967 – BPR moved from Dept. of Commerce to Dept. of Transportation



# Federal Lands Highway

- 1905 – Office of Public Roads succeeds the Office of Road Inquiry
- 1916 – First Federal Aid Road Act passed, 50/50 Federal/State funding
- 1919 – Bureau of Public Roads formed
- 1921 – Direct Federal Construction Authorized
- 1920's & 30's – numerous BPR & CCC projects constructed  
(including Farm to Market roads)
- 1956 – Highway Trust Fund & Interstate Highway System
- 1967 – BPR moved from Dept. of Commerce to Dept. of  
Transportation
- 1989 – Office of Direct Federal Programs becomes Federal Lands  
Highway

# WFL – An Agency Within the USDOT



# Mission

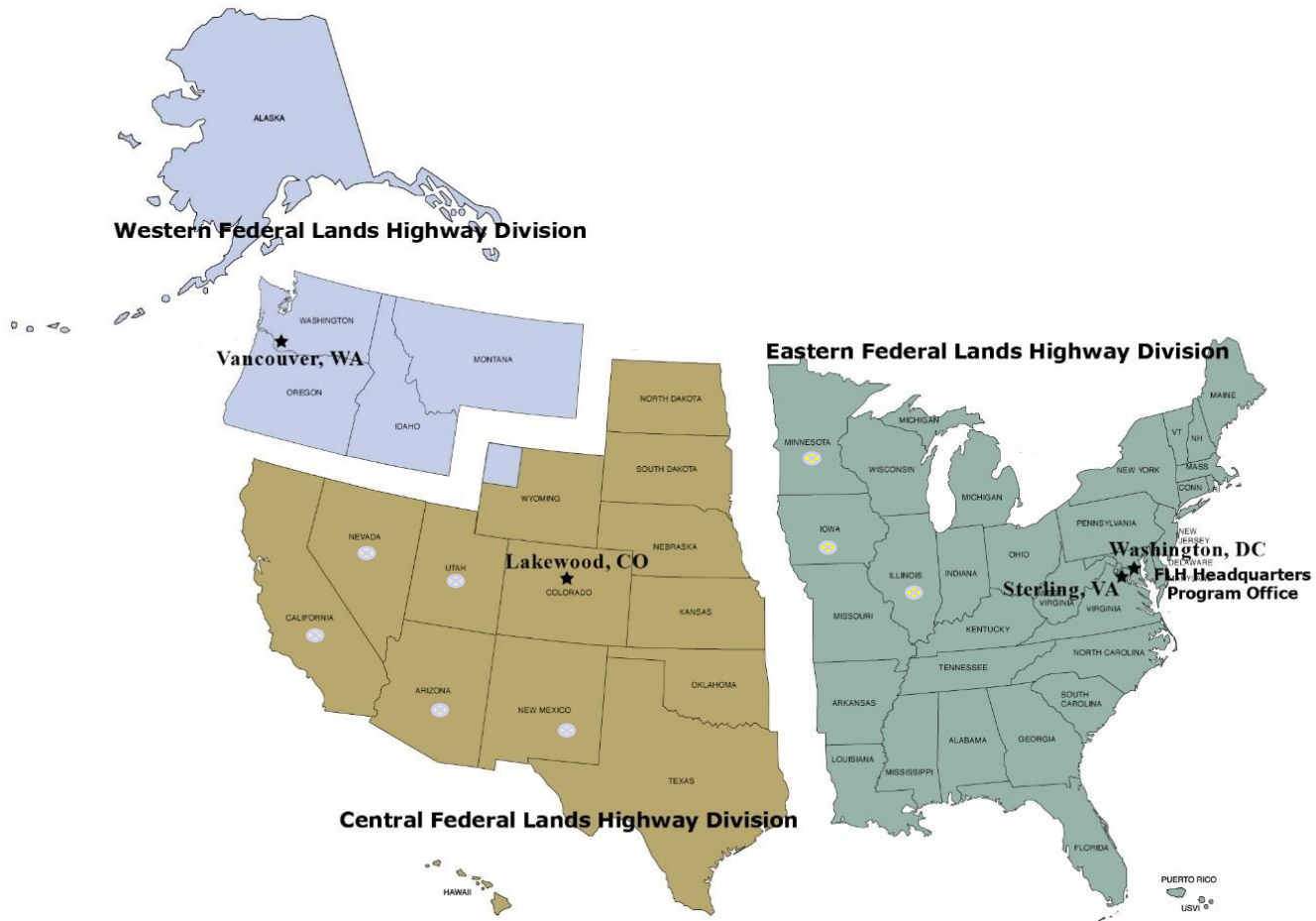
## **FHWA Mission:**

To improve mobility on our nation's highways through national leadership, innovation, and program delivery.

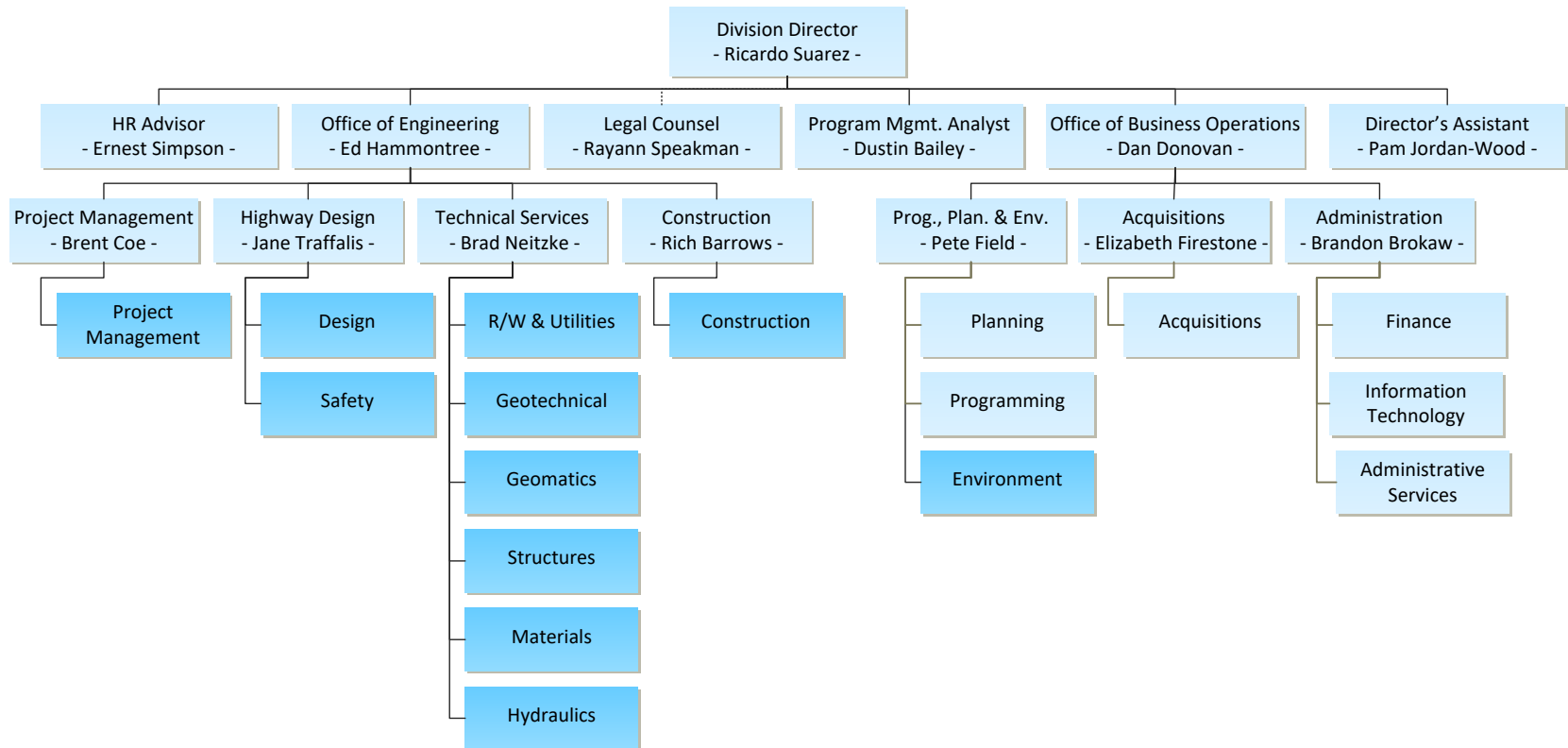
## **Western Federal Lands Mission:**

To improve transportation access to and through Federal and Tribal Lands of the Northwest

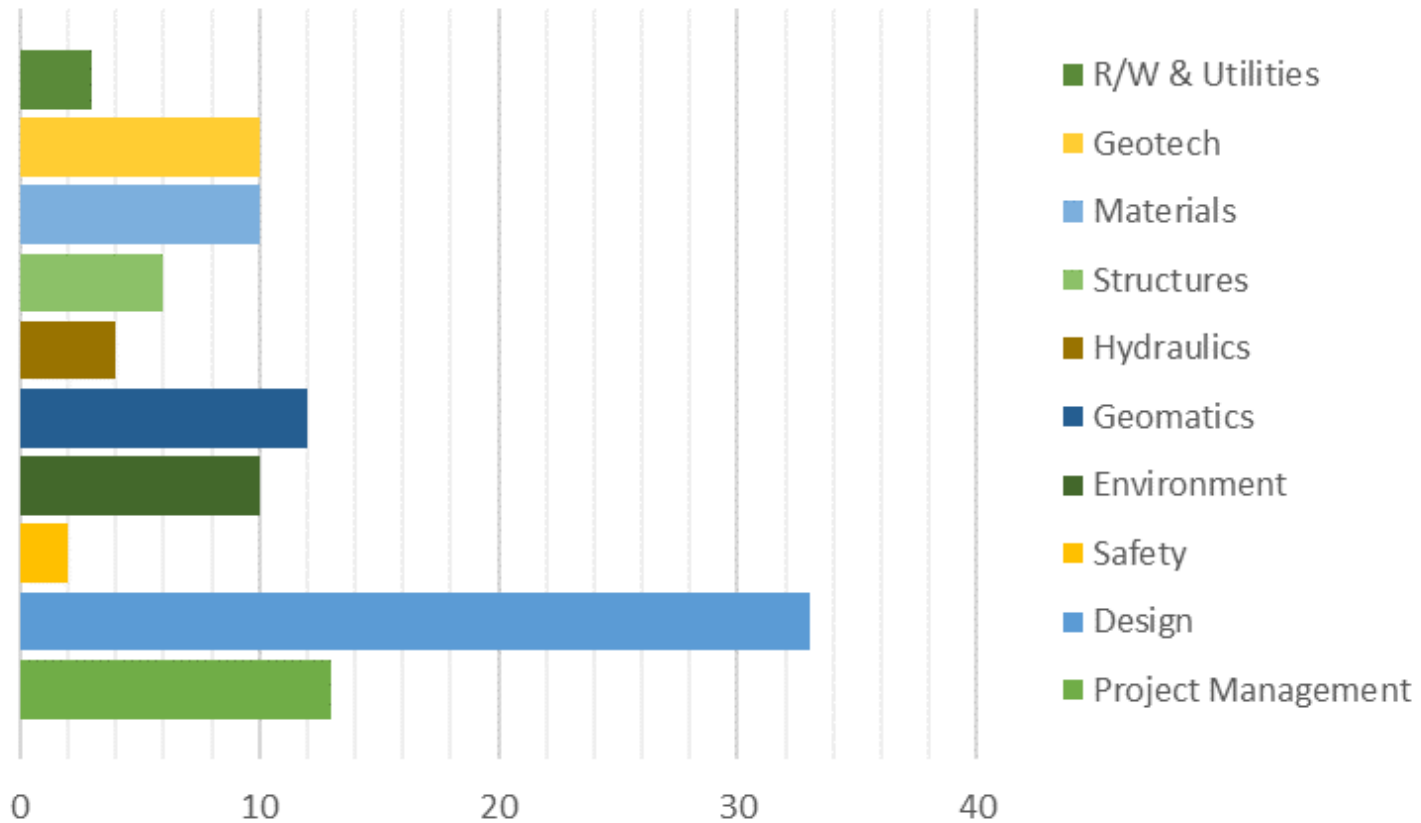
# Federal Lands Regions



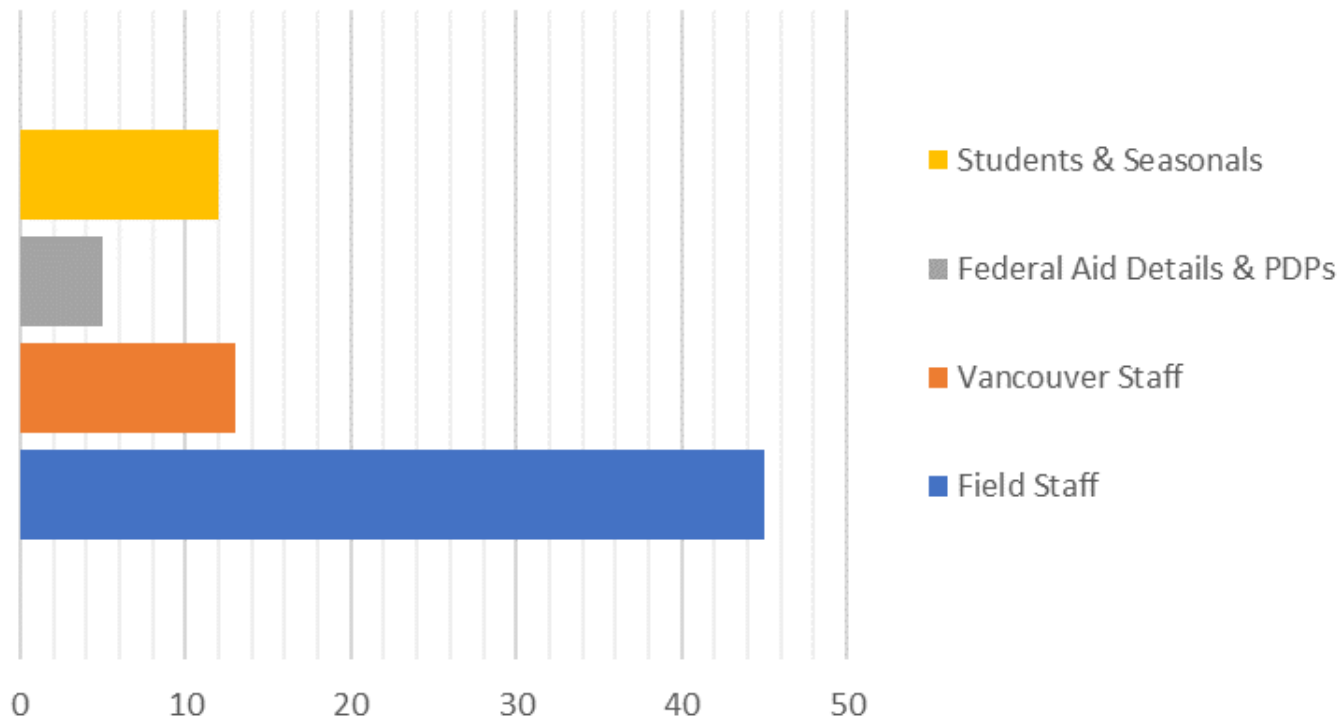
# WFL Organization



# Engineering Workforce



# Construction Workforce

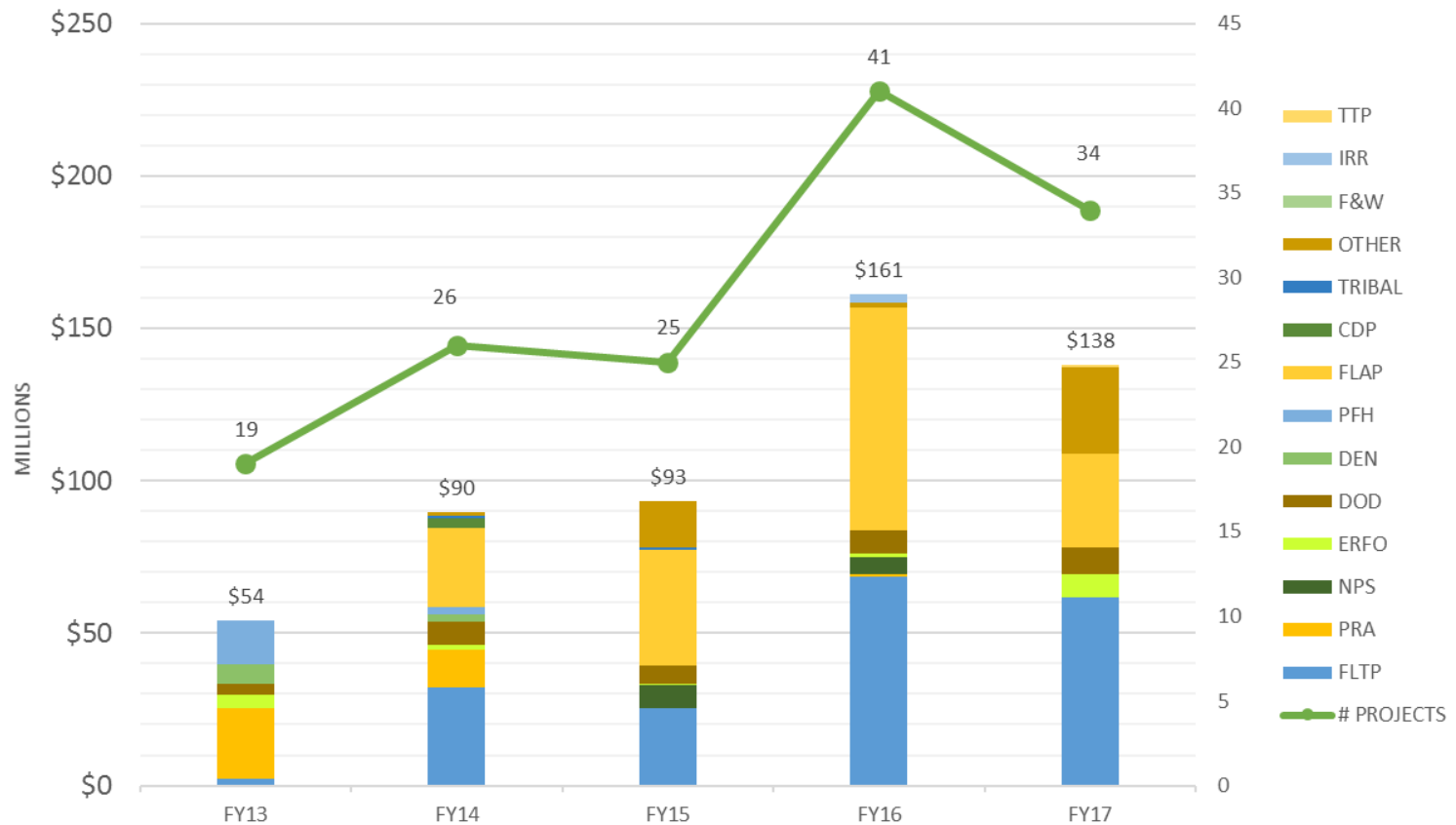


# Partners

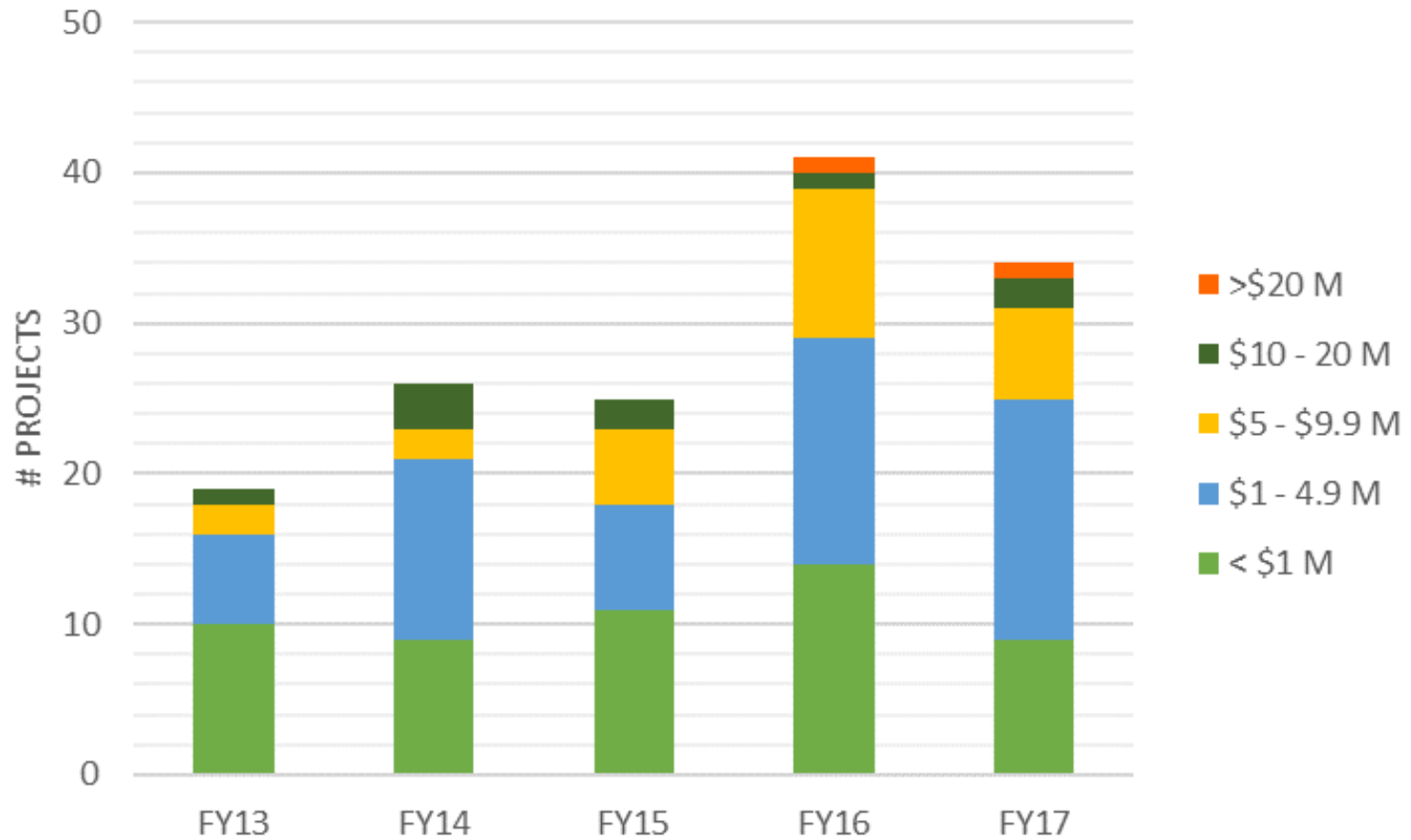
- Federal Land Management Agencies
- State DOTs
- County and Other Local Agencies



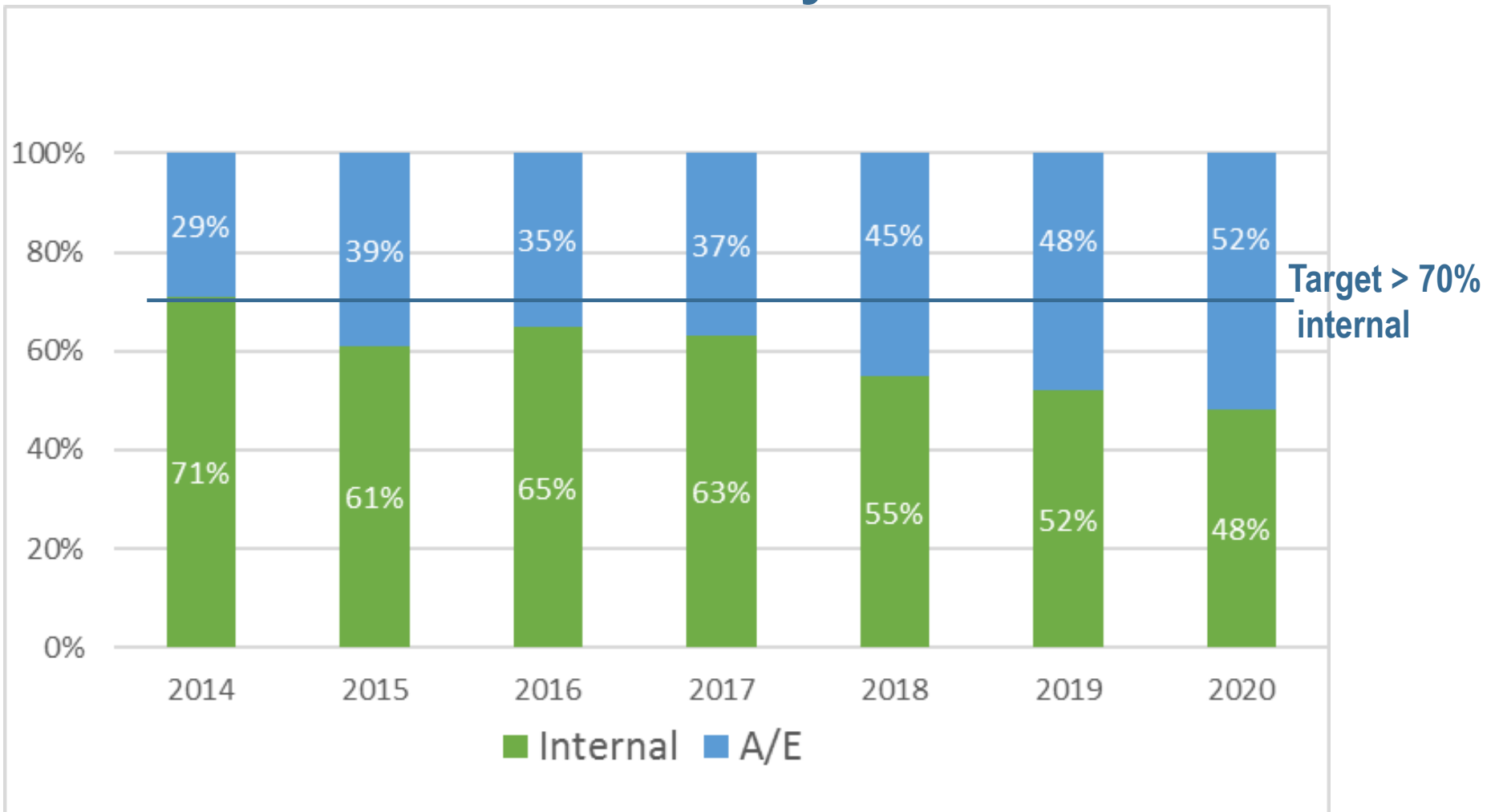
# Contract Awards (by program)



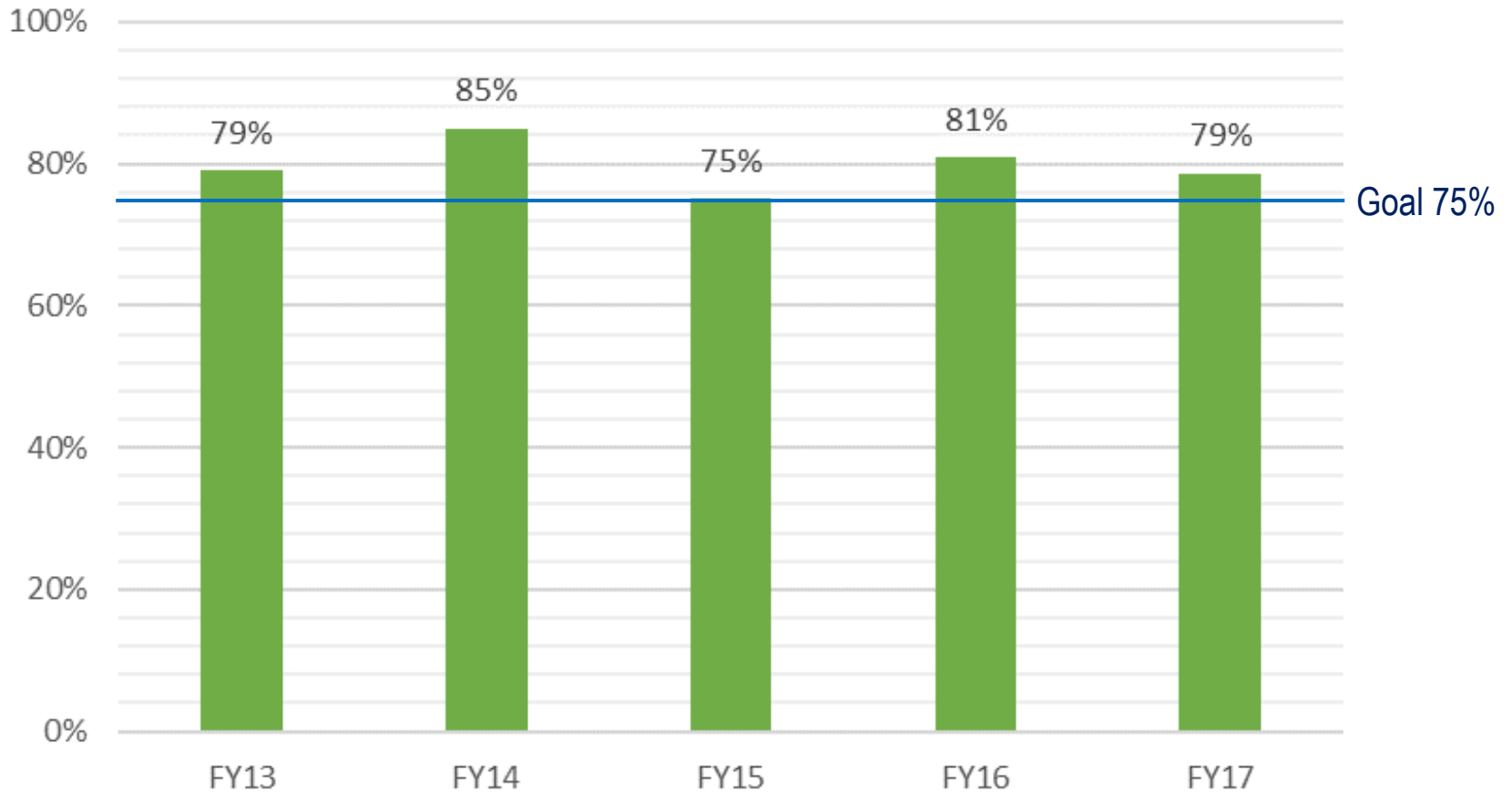
# Project Size



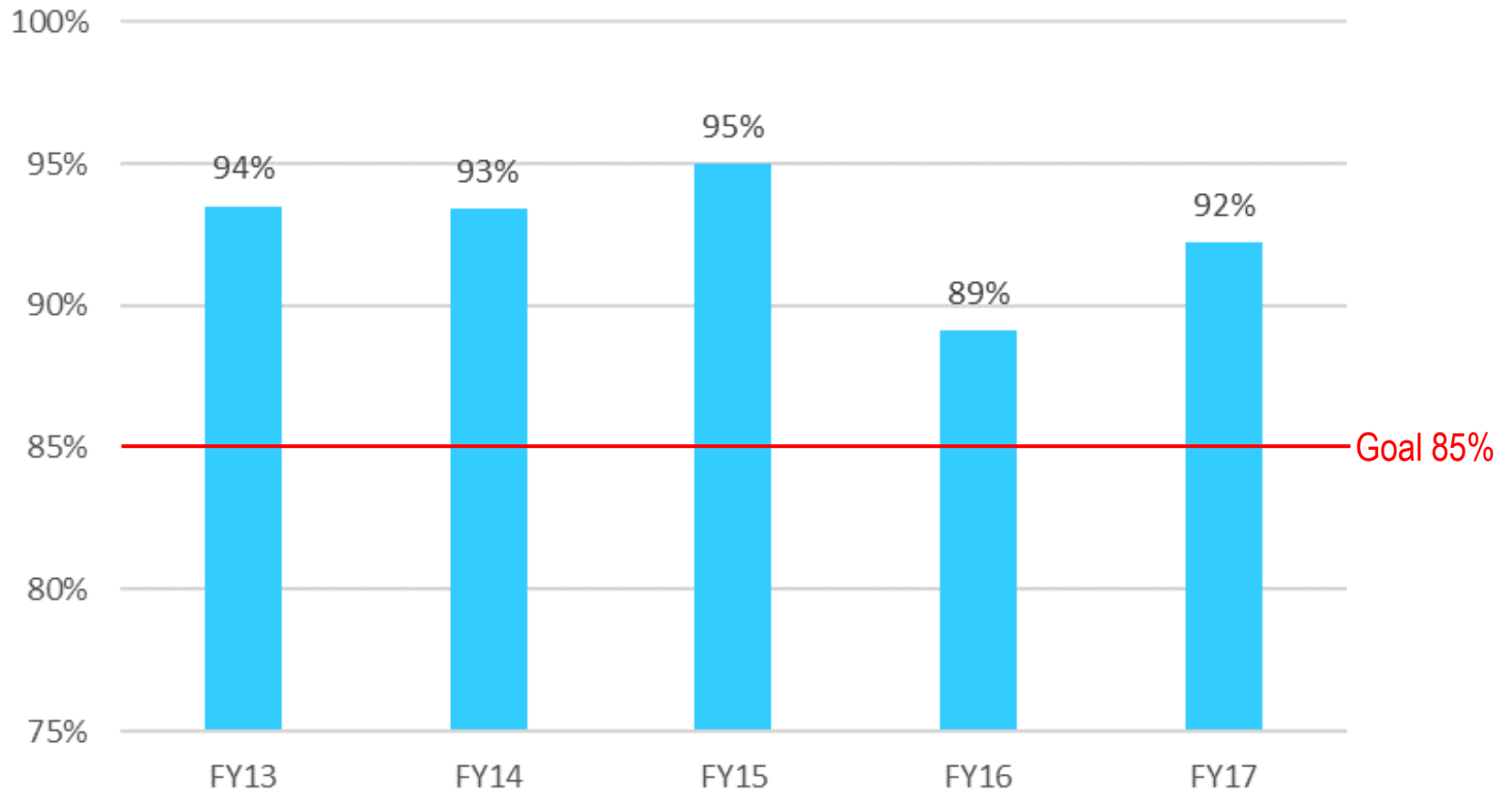
# Internal and A/E Delivery



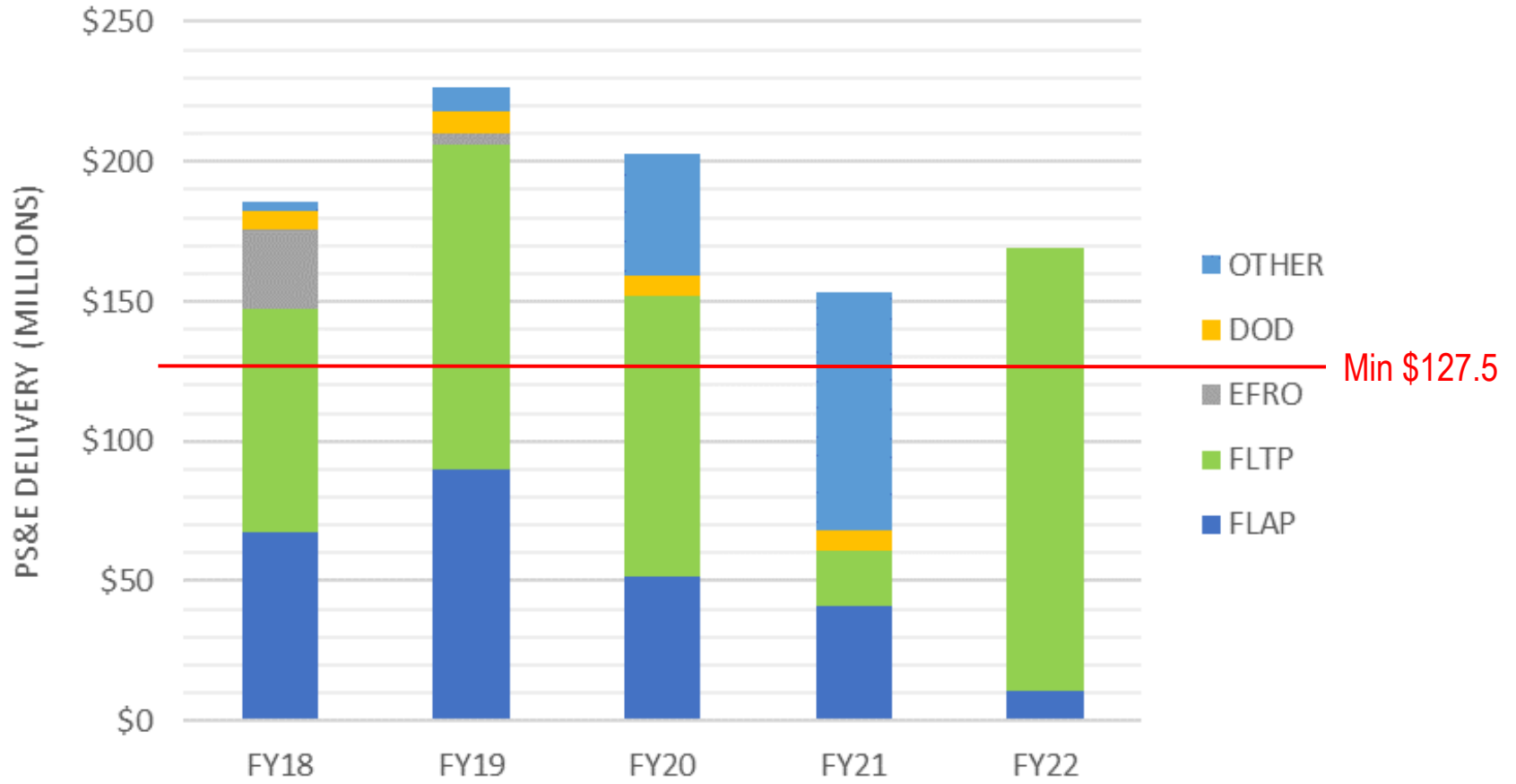
# Funds on the Ground



# Partner Satisfaction



# Forecasted PS&E Delivery



# Continuous Improvement

- Sustainable Practices
- Sharing Technologies, Developments, & Experiences
- Recruiting & Developing Talented Employees
- Embrace Innovation

# Tualatin River NWR





# Grand Teton National Park



## Gros Ventre Roundabout

- Popular tourist area
- Safety and congestion issues
- Multiple funding sources
- Motorists, pedestrians, bicyclists
- Roundabout solution

# Northwest Washington



## Upper Hoh River Road

- Eroding river bank
- Multiple partners
- Resource & Regulatory Agencies
- Engineered log jam barriers





# Manning Crevice Bridge Riggins, ID



# Manning Crevice Bridge Riggins, ID





# Manning Crevice Bridge Riggins, ID



# Manning Crevice Bridge Riggins, Idaho



## Manning Crevice

- Narrow canyon, restricted access
- CMGC contract
- Asymmetrical suspension bridge



# Stoddard Pack Bridge Salmon, ID





# Stoddard Pack Bridge Salmon, ID





# Stoddard Pack Bridge Salmon, ID

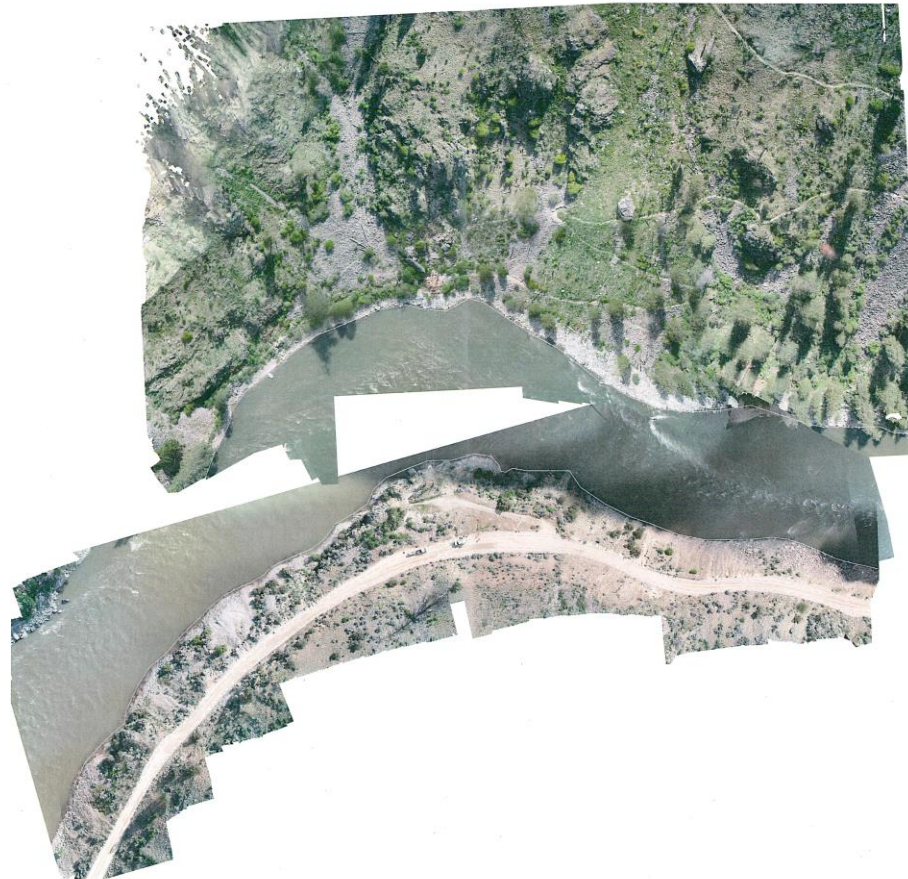




# Stoddard Pack Bridge Salmon, ID



# Stoddard Pack Bridge Salmon, ID







# Pretty Rocks Slide Denali NP





# Historic Columbia River Highway State Trail



# Historic Columbia River Highway State Trail





# Historic Columbia River Highway Gutter Restoration





# Crater Lake NP



# Whiskey Creek ERFO Medford BLM



# Wells Creek ERFO Near Reedsport





# ERFO Field Work



# 360° Camera





Building accessible and scenic roads that ensure the many national treasures  
within our Federal Lands can be enjoyed by all.

Joshua Tree National Park  
California

For more information,  
please visit our website.  
[flh.fhwa.dot.gov](http://flh.fhwa.dot.gov)



Let us put our expertise to work for you